

# The World of Bookbinding.

## PräKant

### Turning-in machine and rubbing-down press

The **PräKant** is a turning-in machine designed to turn in and press down the edges during the production of book covers and other products and may also be used for rubbing down laminated or mirrored covers.

The machine is characterized by the following features:



without extension tables

- no format settings, not even for different board thicknesses
- turning-in and pressing in one pass
- pressing via rollers, therefore no bubbles or creases
- turn-ins very tight to the boards
- 12 different programmes for turning-in and pressing down with different ways of ejection and 2 speeds
- rubbing down laminated or mirrored covers
- optimized for use with the casemaker **PräDeck**
- component of the case-making system **PräDeka**

#### Technical data

**Machine (DxWxH):** 46 x 97 x 34 cm (w/o tables)  
111 x 97 x 34 cm (w/ tables)

**Weight:** 65 kgs

**Power supply:** 230 V - 50 Hz

**Air pressure:** min. 6 bar

**Case sizes:** please turn page over

**Board thickness:** 1.2 - 3.5 mm

**Output:** 60 - 150 pcs / h

**Scope of delivery:** basic machine, 2 extension tables

Subject to technical alteration.

# The World of Bookbinding.

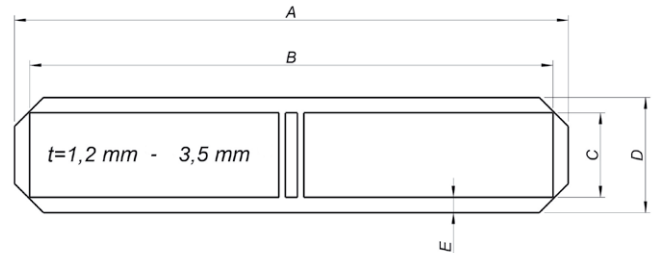
## PräKant

The **PräKant** is a turning-in machine designed to turn in and press down the edges during the production of book covers and other products and may also be used for rubbing down laminated or mirrored covers.

12 different programmes for turning-in and pressing down with different ways of ejection and two speeds are available integrate the machine perfectly into the workflow.

The brush height of the machine may be adjusted individually to adapt to different materials and especially to the board thickness. The thinner and/or softer the board, the higher the value has to be set. All kinds of different products may thereby be turned in at optimum quality.

The **PräKant** can process the following formats:



| Dim. | min.           | max.   |
|------|----------------|--------|
| A    | 150 / 180 mm * | 694 mm |
| B    | 120 / 150 mm * | 664 mm |
| C    | 120 / 150 mm * | 664 mm |
| D    | 150 / 188 mm * | 694 mm |
| E    | 15 / 19 mm *   | 22 mm  |


\* When selecting the programme for stiff binding materials, the minimum size increases.

### Applications:

- book cases, menus
- integral cases
- multi-part and asymmetrical cases

- foamed cases
- game boards, posters
- calendar backs



More on  [www.youtube.com/hhschmedt](https://www.youtube.com/hhschmedt)